



Bathing establishment Fact Sheet

Bathhouse name	Scorpio
Address	Viale Sergio Bernardini, 628
City	Lido di Camaiore (LU)
Contacts	+39 0584 617257
Website	www.facebook.com/bscorpio88

TESTED BY: [Handy Superabile - Social Promotion Association](#) in summer 2023

Please note The following information refers to the verification date shown at the bottom of each card. **The Association** is not responsible for any significant changes made by the property after the visit.

Summary

Bathing establishment Fact Sheet	1
Arrival at the facility	2
Private/public parking.....	2
Pathway from the parking lot to the main entrance	2
Reception.....	3
Bar/restaurant	4
Internal Pathways and common services.....	5
Internal Pathways	5
Toilet and shower accessible to guests with reduced mobility	5
Changing room	7
Beach.....	8
Children's play area	9
Swimming pool	10
Doctors' Offices/Healthcare Facilities	10

Project carried out with the contribution of the





Arrival at the facility

Private/public parking

Presence of private parking	YES
Type of private car park	gravel
Presence of parking space reserved for people with disabilities	NO
Public parking nearby	YES
Type of public car park	asphalt



Pathway from the parking lot to the main entrance

Pathway from the car park to the entrance	by ramp length 100 cm, width 145 cm, slope 6.5%
There are markers and tactile maps	NO
Usable door/entrance width	more than 90 cm





Reception

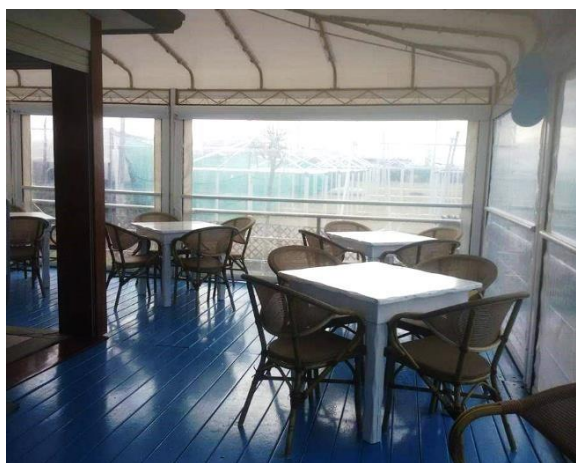
Umbrella booking system	<input checked="" type="checkbox"/> Via web <input checked="" type="checkbox"/> By phone <input checked="" type="checkbox"/> On-site
Presence of multilingual staff	YES
Presence of plant plan with key to services available	NO
Presence of visuo-tactile map	NO
Bulletin board/information panels at an average height of 130 cm in a well-lit area and font size at least 14 dpi with a contrast ratio greater than 4.5:1	YES
The staff attended training courses on welcoming people with different disabilities	YES





Bar/restaurant

Type of venue	Bar/restaurant
Access to the premises	by ramp length 100 cm, width 145 cm, slope 6.5%
Usable door/entrance width	more than 90 cm
Bar counter	more than 100 cm
Types of tables	4-legged
Space underneath the tables from the floor	60 cm
Multilingual menu	YES
Menus with large print fonts	NO
Braille menu	NO
Table service for people with disabilities	YES
Availability of gluten-free food	<input checked="" type="checkbox"/> bread <input checked="" type="checkbox"/> pasta <input checked="" type="checkbox"/> biscuits <input checked="" type="checkbox"/> ice cream <input checked="" type="checkbox"/> Pre-packaged foods





Internal Pathways and common services

Internal Pathways



<p>Indicate whether the pathways connecting the entrance to the beach are flat or with ramps in addition to those already described</p>	<p>Flat paths</p>
	

Toilet and shower accessible to guests with reduced mobility

<p>Number of toilets accessible/usable by guests with reduced mobility</p>	<p>1</p>
<p>Access to the premises</p>	<p>Flat</p>
<p>Usable width of the entrance door</p>	<p>more than 90 cm</p>
<p>Toilet height</p>	<p>50 cm</p>
<p>Open front toilet seat</p>	<p>YES</p>
<p>Support handles</p>	<p>on both sides</p>
<p>Flexible hand shower at the side of the toilet</p>	<p>NO</p>
<p>Free space on the sides of the toilet</p>	<p>left 28 cm right more than 90 cm frontal more than 90 cm</p>






Electric doorbell/phone	YES
Washbasin with space underneath for wheelchair	more than 70 cm
Height from the ground on the bottom edge of the mirror	100 cm
	
Accessible shower available for guests with reduced mobility	YES in common with the toilet room
Useful width of the door/entrance gate if separated from the toilet room	more than 90 cm
Shower type	open-type
Floor-level shower	YES
Shower chair	wall-mounted folding
Grab bar	YES
Presence of shower head or ups and downs	Ups and downs with the lowest point reachable by a seated person
Electric doorbell/phone	YES





	
Outdoor shower available accessible to guests with reduced mobility	Yes outdoor without canopy
Access to the premises	by ramp 8 m long, width over 90cm slope 3.5%
Useful width of the door/entrance gate if separated from the toilet room	more than 90 cm
Shower type	open-type
Floor-level shower	YES
Grab bar	missing
Presence of shower head or ups and downs	fixed shower head

Changing room

Accessible changing room available for guests with reduced mobility	YES
Access to the premises	Flat
Usable door/entrance width	more than 90 cm
Size of the dressing room	width 147 cm and depth 300 cm
Presence of a cot	NO
Coat rack height from the ground	Not detected
Baby changing table	YES



Project promoted by



Regione Toscana



Beach

Type of beach	sand
Access to the beach	Flat
Walkway to reach the umbrellas	YES
Type of walkway	PVC
Walkway width	90 cm



Project carried out with the contribution of the



Presidenza del
Consiglio dei Ministri
Ministro per la disabilità



Removable Platform between the walkway and the umbrella station to facilitate the passage and parking wheelchair	YES
Amphibious beach chair available for helping people with reduced mobility to enjoy swimming (owned by the establishment or by association)	YES

Children's play area

Children's play area	Accessible to children with reduced mobility
There are games for children with reduced mobility	NO



Project promoted by



Regione Toscana

Swimming pool

The property has a swimming pool	NO
----------------------------------	----

Doctors' Offices/Healthcare Facilities

Hospitals near the facility	Ospedale Versilia at 1,7 km, Strada Statale 1, Camaiore
Other Healthcare Facilities	7.7 km from Distretto Socio Terminetto, Piazza del Buon Consiglio Viareggio

TESTED BY: **Handy Superabile Social Promotion Association in summer 2023**

Project carried out with the contribution of the



Presidenza del
Consiglio dei Ministri
Ministro per la disabilità